

# MONTHLY MEMBERSHIP PROGRESS REPORT

LOCATION IDAHO

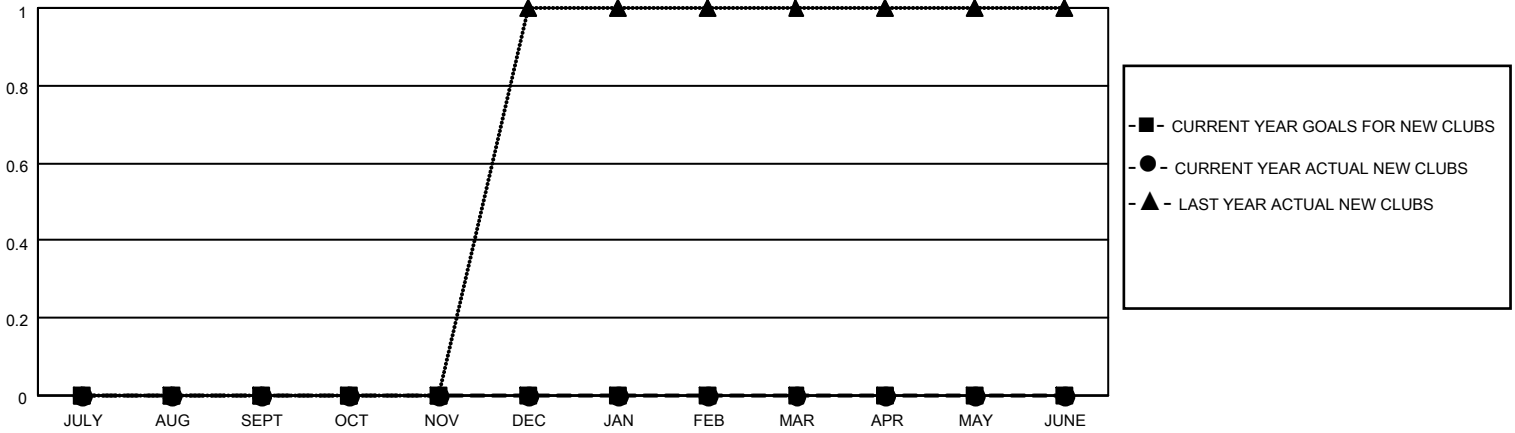
District 39 E

Results as of: 6/30/2022

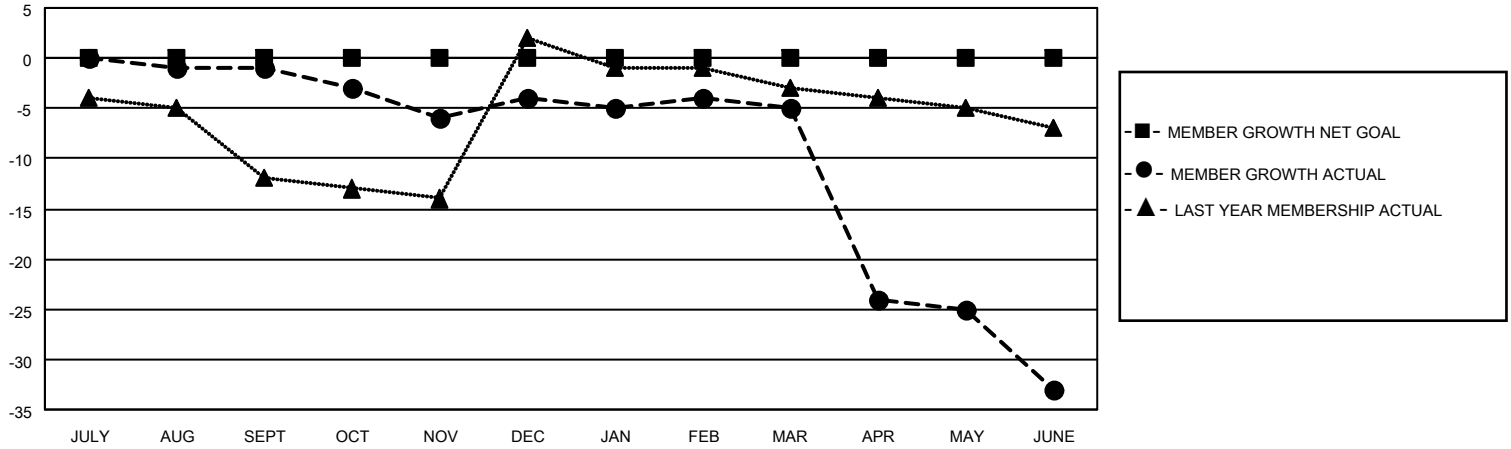
Clubs			
RESULTS FOR 2021-2022			
QUARTER	NEW CLUB GOAL	NEW CLUBS	DROPPED CLUBS
JULY/AUG/SEPT	0	0	0
OCT/NOV/DEC	0	0	0
JAN/FEB/MAR	0	0	0
APR/MAY/JUNE	0	0	1

Members			
RESULTS FOR 2021-2022			
QUARTER	MEMBER GROWTH NET GOAL	MEMBER GROWTH ACTUAL	DROPPED MEMBERS ACTUAL (including transfers)
JULY/AUG/SEPT	0	6	7
OCT/NOV/DEC	0	6	8
JAN/FEB/MAR	0	7	8
APR/MAY/JUNE	0	11	38

**GOALS AND ACTUAL NEW CLUBS CUMULATIVE**



**GOALS AND ACTUAL MEMBERS CUMULATIVE**



DROPPED CLUBS: 1	
<u>DROPPED MEMBERS</u>	
DECEASED	7
CLUB CANCELLED	6
OTHER	48
<b>TOTAL</b>	<b>61</b>

12 CLUBS OF 23 ADDED 1 OR MORE NEW MEMBERS

[CLICK HERE FOR CUMULATIVE MEMBERSHIP DATA](#)

<u>GENDER DISTRIBUTION</u>	
MALE	219 (60.16%)
FEMALE	145 (39.84%)
NON BINARY	0 (0.00%)
PREFER NOT TO ANSWER	0 (0.00%)
<b>TOTAL FAMILY UNIT MEMBERS</b>	<b>116</b>
<b>FAMILY MEMBERS PAYING HALF DUES</b>	<b>61</b>